



Bug Trivia

- How many different kinds (species) of insects are there in the world?
a. 10,000 b. 100,000 c. 1,000,000 d. 1,000,000,000
- What is the state bug of Massachusetts?
a. Ladybug b. Cockroach c. Monarch d. Honey Bee
- How many lenses are in a dragonfly's eye?
a. 10 b. 3000 c. 10,000 d. 30,000
- The tropical stick insect is the longest insect. How long can it be?
a. 5 inches b. 9 inches c. 13 inches d. 18 inches
- How fast can honeybees fly?
a. 2mph b. 7mph c. 10mph d. 13mph
- What is the loudest insect?
a. cricket b. house fly c. June bug d. cicada
- What is the most dangerous insect?
a. fruit fly b. mosquito c. flea d. fire ant
- Studies have shown that humans have 792 distinct muscles, while grasshoppers have 900 muscles. How many separate muscles do some caterpillars have?
a. 500 b. 1000 c. 2500 d. 4000
- How long can a scorpion live without eating?
a. 1 day b. 1 week c. 1 month d. 1 year
- Which of the following insects would be a good source of calcium?
a. Cricket b. June beetle c. Grasshopper d. Red Ant



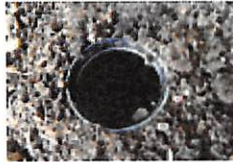
Answers: 1.d, 2.a, 3.d, 4.c, 5.b, 6.d, 7.b (malaria), 8.d, 9.d, 10.a (76mg)

Answers: 1.d, 2.a, 3.d, 4.c, 5.b, 6.d, 7.b (malaria), 8.d, 9.d, 10.a (76mg)

Make Traps and Habitats to Find Bugs at Home!

1. Pitfall Trap

Dig a hole in the ground big enough for a jar to fit inside so that the top of the jar is at ground level. The bugs then fall into the jar. Put a small amount of soil and a twig or two inside so that the bugs can right themselves if they land on their backs. Be sure to cover the trap to prevent over exposure of the sun or rain on the bugs.



You can use this in different habitats such as on a field, in a garden, under trees, etc. Leave the trap set overnight and make sure you check it daily. Remember to release your bugs once you observe them.

2. Tree Towel Trap

Tie a towel to a tree using bungee cords as shown below and carefully remove it in the morning. Try different trees or wetting the towel and compare results.



Many bugs including woodlice, earwigs, and beetles climb trees at night. This trap gives them a hiding place at dawn!

3. Flower Pot Trap

This is more of a shelter than a trap, and is fun to have around the yard to use for exploring! Take a sturdy flowerpot with space/hole at the bottom to allow bugs to get in. (Use something heavy so it won't blow away in the wind.)



source: www.primaryscience.info



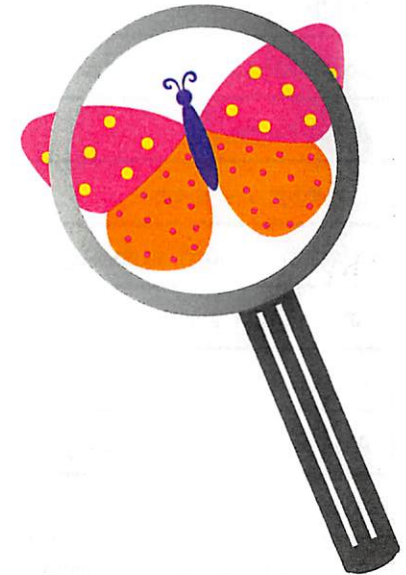
Nahanton Nature Center



455 Nahanton Street • Newton Centre, MA 02459

BUG SCIENTISTS!


Scavenger Hunts and Information




Setti D. Warren, Mayor
Robert DeRubeis, Commissioner
Judy Dore, Recreation Manager
Holly Peterson, Nature Center Director

Bug Scientists: Entymologists! Bug Scavenger Hunt



1. Find as many of these items as you can around our park.
2. Don't touch any bugs that might bite or sting. 
3. Be careful not to kill any insects or disturb webs or homes still in use, and remember to release live bugs where you found them after your hunt.
4. Stay on designated paths to avoid any unwanted contact with poison ivy.

Item	What and where (if you can't collect it)	Check off
Something a bug might eat		
A bug home		
Bug eggs or egg case		
A leaf that a bug has damaged		
An outgrown exoskeleton		
A spider web		
A bug hidden by camouflage		
A bug larva (grub, maggot, caterpillar, etc.) 		
A bug pupa (cocoon or chrysalis)		
A home for a bug community (ant hill, bee hive, etc.)		
A bug that bites or stings		
A bug that helps people		
A pretty or colorful bug		